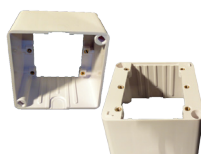


VOLUME CONTROLLERS 50W

LTS.AT50



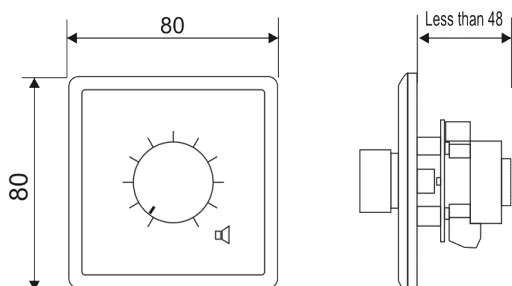
The range of attenuations answers to your expectations in terms of flexibility and adaptation to your sound security installations. The attenuator 50W has a level shifter relay which, when this relay receives a command from the security central, to put the level at its maximum regardless of the position of the attenuator.

This attenuator can be imbed in a box of electrical installation but can be protrusive mounted by the use of ABS box proposed in option (LTS.EC3) Finally, the design of this attenuator is current and will succeed your integrations.

Specifications

• Rates power	50 watts
• Line input	100 volts
• Attenuation	Per step 3 dB
• Total attenuation	33 dB / 10 positions + off
• Mounting	White / ABS
• Dimensions	80 x 80 x 48 mm
• Applications	General / security sound

Dimensions



Connections

